



Fall, 2016

INSIDE

PRESIDENT'S MESSAGE..... 1

**EMERGENCY GPS
CO-ORDINATES.....3**

DOCK SALE INFO.....3

CORN ROAST REPORT.....4

DIRECTORS' CORNER.....5

NEW DIRECTORS NEEDED.....5

REMEMBERING.....6

MEMORY BOOK.....10

VANCE BIRD COUNT.....10

2016-2017 CALA EXECUTIVE.....11

MISSION STATEMENT.....11

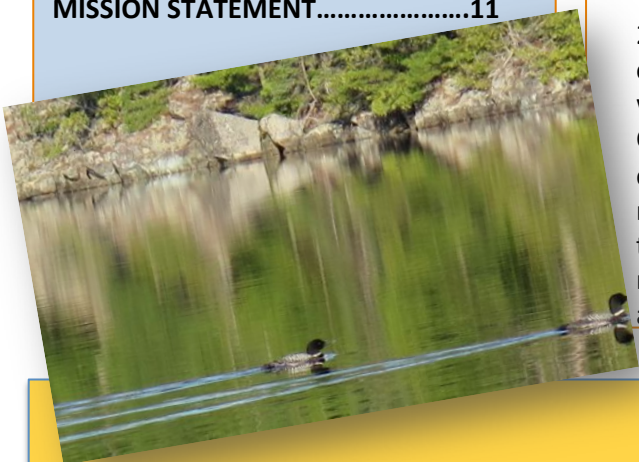
PRESIDENT'S MESSAGE

Well the summer of 2016 is in the books. And what a glorious summer it was in terms of weather, spending time with our lake friends, taking some quiet downtime, and of course in terms of accomplishing several of our planned projects. It seems to me that even the bugs disappeared early this year.

So let's do a quick review of this summer past. Your CALA held a very successful Corn Roast hosted by the Temagami Boat Livery, and a great Family Poker Run featuring plenty of participation and tons of great prizes. We owe many thanks and much gratitude to Lil and Rene at TBL for hosting this event, and to CALA Directors Cindy Dougall and Greg Feys for their dedication and exceptional organizational efforts. New to the annual activity this year was a silent auction. It was a huge success! So look for a bigger and even better silent auction in 2017. This is the only significant fundraiser that CALA stages. So if you have something you can donate to the poker run prize table, or the silent auction, or you know someone who might, we would love to hear from you.

Your CALA Executive held their final meeting for 2016 on the Labour Day weekend. But our work of course continues all year long. We're looking forward to more water testing results from our new Water Quality Director Chris D'Aoust. With regards to forestry activity, as of a couple of weeks ago, there was still no word on whether or not the "Askin 81" block near Teacher's Bay would be cut this fall. Look for Forestry Director Dave Zimmerman's report in this newsletter for further updates on forestry activity on our lakes. Of special interest to all of us is the

.....continued on next page



fact that the current 10 year plan for the Temagami Management Unit will expire in 2019. Typically these 10 year plans are nearly 1000 pages long and take upwards of two and a half years to write. CALA, as a stakeholder representing all residents on our lakes, will be invited to the first of many public consultations that will be held beginning this fall. We will watch carefully. Especially since the duties of writing the new prescription will be handed over from the MNRF to private interests. This type of downloading is now very typical throughout Ontario.

I want to take a moment to write about an emergency situation which occurred in Teacher's Bay back in early August. It ties nicely to a message I wrote earlier that referred to our need for peace and solitude on the lake versus our need for neighbours who make it a point to look out for each other. It is a delicate balance! One morning in early August, one of our bay residents was stricken with a terrible kidney stone attack. Of course this person had no idea it was kidney stones. Doubled over in pain, he hobbled over to his neighbour's place. They happened to be in at the time. The neighbours immediately offered to drive him to the hospital in North Bay. He declined as he felt he would not be able to withstand the excruciating pain during the trip, and he requested that they call 911. They did, but were fully aware that their cell phone service was sketchy at best. This was clearly going to be a test of the 911 service on the lake. They made the call successfully, but it was dropped shortly after it began. This resulted in the neighbour coming over to our place to use our newly installed "home phone" to make a second call to 911. The call went through without a problem. In the meantime, one of the operators at 911 called the original cell phone back and made contact. So in fact there were now two 911 calls in progress for the same emergency. Both calls gave the Blue Sign number, and the GPS coordinates of the access point at the south end of Rabbit Lake as the emergency pickup point. Happily the process worked, and about 30 minutes later an ambulance arrived at the access point to transport the patient to the emergency ward at the North Bay Regional Health Centre. The patient has since fully recovered.

So there are several important things to recognize here. Firstly, how fortunate we are to have our tight knit little community on the lake that genuinely cares about each other's well-being. Secondly, although everything worked out in the end, it was a fairly uncertain process, largely due to the less than perfect cell phone network in many areas of our lake. Although the lake is clearly in transition with many younger people buying existing properties, there are still many (me included) who are gracefully aging. And many of those who are aging are of the old school who say, "We've lived here for many years without phone service, why should it change now?" The answer to that question is that now the technology that may save your life exists, and it is relatively simple to use and it is relatively inexpensive. I suppose that as the years pass, cell phone service will likely improve. But in the meantime, I can tell you that many service providers now have a very simple "black box" (modem) into which you can plug your home phone. The service is much like our old fashioned land line, simple to use, and is very reasonably priced....as in \$15 to \$20 per month. And you can shut it down for the winter months! Although this system still has brief sessions of "NO SERVICE", I would say it is at least 90% reliable. However, even though it does operate on a rechargeable battery, it will have to be plugged into a 110-volt power source for recharging. For those of you on solar power, even a small solar system should have no problem running this modem. Check with your own service provider to see if they provide such equipment. Alternatively "cell phone booster" technology is improving. However I hear from many users that it is expensive and is still in many cases unreliable.

Secondly, I would suggest that every family develop a plan and know what to do in the event of an emergency. Post your residential blue sign number and your GPS coordinates clearly in a central location in your home or cottage, so you can readily give them to emergency personnel. If you are water access, also have the blue sign number and the GPS coordinates of the access point you will use during this emergency. It is unlikely that the Emergency Services will be able

.....continued on next page



President’s Message continued:

to come to you on the lake if you are water access only. The last thing you need is to try and find this information during the panic of an emergency.

So now, if you are like us, we begin preparing for the fall season, and Christmas, and will very soon start counting the number of sleeps until spring ice breakup in 2017. Look for information in this newsletter regarding a new event for 2017: the **2017 CALA LAKES DOCK SALE**. We are tentatively planning it for Saturday July 1, 2017 from 10 am to 3 pm. It will consist of you cleaning out your treasures, and setting up on your dock to sell these items; kind of like a giant garage sale on the water. You will have some type of balloons etc. on your dock so that people boating around the lake will know that you have something for sale. You will pay a small nominal fee for CALA to advertise your sale, but all of the profits you make will be yours. We’re working on the details, but as always, we would appreciate any input you might have. We will need to know following the spring newsletter (or before) if you wish to participate so that we can post something on our website, and/or send out an email blast to our membership advertising who is participating.

So let me wish all of you a peaceful remainder of the season if you are still on the lake, and/or a very Merry Christmas season. I wish you and yours good health and a very happy and prosperous 2017.

Cheers, Prez Peter

IMPORTANT GPS CO-ORDINATES FOR EMERGENCIES ON THE LAKE

According to Google Earth and provided by Deb Laroche from Public Works

Rabbit Lake Access Point	680 Rabbit Lake Road	46° 55'31"N	79° 41' 11"W
Cassels Lake Access Point	381 Fox Run	47° 3' 59" N	79° 42' 59"W
Temagami Boat Livery	63 Stevens Road	47° 3' 57" N	79° 46' 52"W



Corn Roast, AGM & Picnic Report

Thank you!

Thank you to all the local businesses and individuals who so generously provided prizes for the CALA annual Poker Run and Corn Roast.

Thank you to all who contributed to the day:

Hosts – Lillian and Rene Laperriere

Co-ordinator for the Day – Greg Feys

Poker Run Co-ordinator – Cindy Dougall

Poker Run Tabulations – Dave Savelli, Sue Olynyk, Brad, Anne & Adam Davies,

Sign-in Table – Georgina Feys & assistants

The Band – “Jerry and the Turn Up Band” (whoever turns up plays)

Children’s Activities – Marian Landry and Mary Vance

White Tent – The Zimmerman Family

Photos – Sally Middleton

- Chamber of Commerce
 - Will Houghton
 - Cindy Dougall
 - Brad Davies and family
 - Dougall/Middleton family
 - Our Daily Bread
 - Temiskaming Speaker (printing)
 - Source for Sports
 - DENM Engineering
 - Northland Traders
 - Duffy/Julie Blondin
 - Temagami Water Systems
 - Grant Home Hardware
 - Petro Canada
 - Stan and Kaye Barrett
 - Temagami Boat Livery
 - Temagami Marine
 - One Stop Trading Post
 - Tim McBride
 - Gramps
- and Clearwater Builders/Nydock for the awesome silent auction item.

- 120 signed-in attendees
- Denna Benn – winner of 50/50
- Bob Shaw - winner of silent auction



As usual, Rene and Lillian went all out to host this event. We appreciate very much all the work that it entails. Mother Nature provided a perfect day and Cindy Dougall’s persuasive personality had us well-endowed with prizes for the Boat Poker Run and Corn Roast. Greg Feys did a fantastic job of co-ordinating everything, while his wife, Georgina distributed name tags and warm welcomes at the sign-up table. Everyone was in agreement that the corn was delicious (despite drought conditions in so many parts of the province) and the buffet table was laden as usual with everyone’s tasty dishes.

“Jerry and the Turn Up Band” turned up, tuned up and lent a festive air to the afternoon which had everyone tapping their toes. Once again a feature of the August get together was activities especially for children. Mary Vance hosted a lively crew of participants for lawn darts and fishpond plus art activity decorating fish cutouts. Marian Landry provided the beadwork craft and kids were happy to make these crafts that they were able to take home with them. In Bill Bedford’s absence, Sally Middleton stepped up with her camera to capture some highlights of the day. These should be on the CALA website soon.

All in all, a great day from beginning to end.

Directors' Corner



TIMBER REPORT – Sept. 4, 2016

Due to a slow lumber market and extra dry conditions there still is very little logging activity. There are several logging areas ready to go and they are Askin 81 (Ecom, Elk Lake) south of Teachers' Bay; Cassels 67 and 68 (Goulard) in the old Blueberry Cut and Riddel 81 on the South Wall of Rabbit Lake south (Great Pacific).

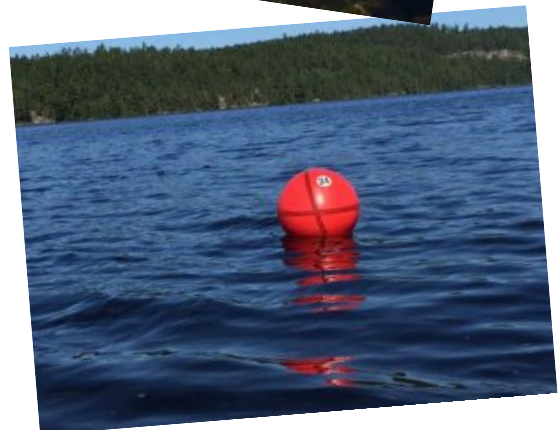
The logging activity will increase with a pick up in our economy.

Dave Zimmerman, Timber Director

MARKER BUOY REPORT

With our recent \$4000 assistance grant from the Municipality of Temagami, we have ordered 21 new Marker Buoys and 3 No Wake Balls for a total of \$2863.50. We will still need attachments, anchors, 3/8" clevises, U-Bolts and marine paint. Many thanks to Brad Davies who found and applied numbers to the existing buoys that would weather the storms. In addition, he made a GPS Map so that lost buoys when found can be replaced in their original positions.

Dave Zimmerman, Marker Buoy Volunteer



NEW FACES REQUIRED ON OUR EXECUTIVE

Almost every year CALA is looking for people to join our executive. If you want the best for our lakes and are interested in working with a dedicated group of like-minded individuals, please contact President Peter Olynyk:

peter.olynyk@mohawkcollege.ca

MEMBERSHIP REPORT

I would like to thank all who have advocated for CALA membership. With everyone's efforts we have seen over 20 new applications this year. New applications will be sent out early in the new year. Please check your mail, fill them out and send back.

Greg Feys, Membership Director

WATER QUALITY REPORT

I am pleased to be volunteering as a CALA director assuming responsibility for the water quality portfolio. The D'Aoust family have been visiting and cottaging on Rabbit Lake for 20 years and we have always appreciated the wonderful quality of our recreational lake system.

I would like to recognize and thank the past directors of water quality, Martin Nighbor and Dave McAlaster, for their time commitment and dedication to the role. Both individuals have been instrumental in conducting water testing recommended under the Lake Partnership Program. Martin Nighbor has also been very instrumental in taking the initiative to assemble test data both current and historical in a spreadsheet in order to allow us to trend and monitor data for any changes in water quality. Every lake will have its own unique characteristics and profile associated with turbidity, phosphate and calcium levels based on local geological and environmental conditions. By trending data we can determine if a change has occurred and what may be the new environmental influence causing that change. Thank you as well to Martin and Dave for volunteering to continue to perform the testing in their areas of CALA and to Martin for his continued commitment to update the spreadsheet in order to trend our water quality specs going forward.

As mentioned in past newsletters, additional microbiological testing was performed in the summer of 2015. Random samples were selected across the lake system and although variable results were found all data indicates a good quality for a recreational lake system such as CALA.

During the summer of 2016, I did select 6 random locations in Rabbit and Cassels during August and provided to my employer's private lab for testing. All samples were less than 40 cfu /100 ml for coliform bacteria and all samples were negative for E coli.

If you have any questions or suggestions related to water quality matters or if you wish to assist in any capacity, please feel free to contact me.

Chris D'Aoust, Water Quality Director

REMEMBERING



Anne Bedford

Sadly, we have lost another CALA member this summer-- Anne Bedford. Anne and her husband Bill (affectionately known as our official photographer) and their family have been long-time cottagers on Rabbit Lake. Bill's father, back in the 1950s, fell in love with Temagami while on a fishing trip with work mates. When the Zimmermans sold off one of their six cottages, Bill's dad had first choice. They named their cottage "Sunrise" and it became the family cement along with numerous improvements and enlargements.

Anne and her father-in-law had a special bond and each gave the other their deserved respect. Family focus was always talked about when the family got together and each story had to be trumped by another. At the cottage Anne would look forward to planting her small flower garden and doing crafts with her grandchildren. She will truly be missed from this piece of Heaven and beyond by her family and many CALA friends.



TREASURER'S REPORT

CALA FINANCIAL REPORT GENERAL ACCOUNT

January 1, 2015 - December 31, 2015

BALANCE FORWARD, GENERAL ACCOUNT , as at January 1, 2015 **\$ 2,039.19**

INCOME

Membership Dues (2015)	\$ 2,435.00
Outdoor Smart/Boat Smart Commissions	45.12
Donations	200.00
50/50 Draw (re:Pig Roast 2015)	69.00
Hat sales	40.00
Advertising	130.00
Special grant- Buoys/Markers project	3,895.08
Total Income	\$ 6,814.20

EXPENSES

Pig Roast costs - 2015	\$ 963.28
Donations (TAFIP)	50.00
FOCA Dues	355.75
Liability Insurance	1,119.96
Newsletter, Roster, Website Related Costs	486.39
Bank Service Charges	48.39
Special project - Water testing fees	70.63
Special project - Buoys/Markers related costs	3,976.41
Total Expenses	\$ 7,070.81

DEFICIT (excess of expenses over income) **\$ (256.61)**
(56,814.20 - 57,070.81)

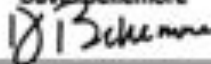
ENDING BALANCE, GENERAL ACCOUNT, as of December 31, 2015 **\$ 1,782.58**

Respectfully Submitted

5/20/2016

CALA Treasurer

David Bellemore



**CALA FINANCIAL REPORT
FISHING ACCOUNT**

January 1, 2015 - December 31, 2015

BALANCE FORWARD, FISHING ACCOUNT, as at January 1, 2015 \$ 569.96

INCOME

Boat Poker Run Profits (2015)	\$ 222.12	
Total Income		\$ 222.12

EXPENSES

Bank Service Charges	\$ 23.40	
Total Expenses		\$ 23.40

SURPLUS (excess of income over expenses) \$ 198.72
($\$222.12 - \23.40)

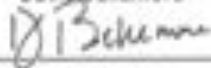
ENDING BALANCE, FISHING ACCOUNT, as of December 31, 2015 **\$ 768.68**

Respectfully Submitted

5/20/2016

CALA Treasurer

David Bellemore



WATER MANAGEMENT REPORT

There is no report available at this time.

FISHING REPORT

We welcome Chad Armstrong as our new Fishing Director. He is a home owner on Cassels Lake.

Temgami Area Fish Involvement Program
TAFIP Report for 2016
by Ike Laba, President of TAFIP

1. As explained on the phone earlier today we caught the tail end of the Walleye spawn in 2015 due to very warm weather while there was still ice on the lake. Due to the ice
.....continued on next page

COMMUNICATIONS REPORT

We always welcome your input to the Newsletter. As you will see in this issue, the Vances have shared their love for the extensive birdlife that they witness from their spot on Rabbit Lake. We encourage you to join their conversation by presenting your own interesting sightings-----or start another topic altogether.

In our last two issues of the Newsletter we featured articles called *Municipal Watch* by Mr. Paul Middleton which I know many of our members appreciated very much. As most of us live outside of Temagami, it was good to have an insider's report on municipal affairs. Unfortunately, Mr. Middleton has decided not to continue these reports, but we do thank him very much for his past contributions.

Wishing you all good health and a good winter,
Kaye Barrett, Communications Director

condition we could not get into the Net Creek spawning area as there was still too much ice. In 2015 we were successful in getting approx. 100,000 Walleye eggs out of Net Creek and 500,000 out of Lake Temagami.

2. Early in 2016 we decided we would not get caught by an early weather break. We were ready about a week ahead of the spawn. Thanks to Russ Manderstrom who provided a small barge to make it easier for volunteers to work off in gathering the eggs, the nets were repaired and ready, and the hatchery water flow was working and all the equipment was sterilized.

3. In 2016 we collected 1,000,000 (1 million) eggs from Net Creek in Cassels Lake and 500,000 from Lake Temagami for a total of 1,500,000 Walleye eggs.

4. The success rate of the hatch this year was in the range of 85% which is good.

5. This year the eggs were slow in hatching due to the cool weather but as soon as it warmed up we had to scramble to get the fry out into the lakes such as: Cassels, Net and Lake Temagami. Were not able to physically put fry into Rabbit or Snake as the MNRF still had to do an EA on Rabbit and Snake Lakes. MNRF guaranteed that this would change in 2017. We did stock fry at the narrows between Rabbit and Cassels and also at the narrows between Cassels and Snake Lakes. Although the 3 lakes (Cassels, Rabbit and Snake) are basically the same body of water MNRF would not budge. Net Lake also was stocked with fry in various areas.

6. The Fry have to be taken out of the hatchery within a maximum of 5 days due to cannibalism. We did stock the following:

- a) Cassels Lake various locations 475,000
- b) Net Lake various locations 240,000
- c) Sherman Pond 105,000
to be raised as fingerlings
- d) Red Squirrel Pond 75,000
to be raised as fingerlings

Total for Net/Cassels 895,000

- a) Fry to Lake Temagami 260,000
 - b) Fry to Roosevelt Pond 155,000 to
be raised as fingerlings
- Total for Temagami 415,000**

7. As of today's date the hatchery bins, jars and all the equipment have been cleaned and sterilized and ready to go for the 2017 season. Also all the trap nets have been repaired, put away and ready to go for next year.

8. Within the next 2 months we will be repainting the holding bins, repairing some of the jars, painting the deck, restoring the hatchery sign, and finally draining and winterizing the water system as well as getting all the equipment ready for next year.

9. We do have an issue: Due to this years dry weather conditions we will have to remove the Fry from the Red Squirrel Pond as we have no more reserve water. This procedure is now planned for Monday August 1st weather permitting. In normal conditions fry stay in the holding ponds until near the end of August. These fish will be deposited in Cassels and Net Lakes. Hopefully the Sherman pond will be OK until late August where they will also be deposited in Net and Cassels Lake.

10. There is still a lot of work which will end around the end of October or early November especially with year end reports to the MNRF, DFO and OFAH.

11. Some items we are looking at for next year are:

- a) a better water reserve (Sherman and Red Squirrel Ponds)
- b) a aeration system for Sherman and Red Squirrel ponds
- c) a larger pump system replacing a seized Mark 111 pump
- d) better access to the Roosevelt Pond

MANY THANKS TO IKE LABA FOR SHARING THIS DETAILED REPORT.

Chad Armstrong, Fishing Director

PROMOTION & COMMUNITY LIAISON REPORT

On behalf of CALA and my position of Community Liaison Director, I would like to sincerely thank the wonderful community of Temagami and surrounding area for their generous support this year. We had so many local businesses donate items toward our annual Poker Run. What a great community! We were also very lucky to have several lake residents from near and far support us as well....prizes prizes prizes! We can't thank you enough for your support. We hope you enjoy events like these and will keep your calendars open for summer 2017!

New this year we will be organizing a lake wide Dock Sale. What a better way to get your garage-sale fix on the relaxing waters of our lake system! Not to mention the chance to finally clear out those items you just can't find a use for anymore. Our

motto is "*someone's trash is someone else's treasure*" and I know this will surely be a great event! Mark your calendars for Saturday July 1st and gas up the boat to cruise the lake and take stock of the items that participants will be having for sale right at water's edge. Who knows what you might find!!!!?? Interested in getting yourself on the map as a "Dock Sale" participant? The cost is \$10 and this will include your dock & cottage location on the Dock Sale advertising posted at the Landings, as well as in print online or in the newsletter. More details to follow in the Spring, but should you like to get a head start and reserve your ad now please be sure to send an email to cindy.dougall@fbreop.ca I'd be happy to answer any questions that you may have.

Hope you enjoyed the wonderful cottage season of 2016 and look forward to seeing you at the lake next year.

Cindy Dougall, Promotions and Community Liaison Director

Thanks to Lillian Laperriere for these photos.



Fall colours as seen from Temagami Boat Livery



The Super/Hunter's Moon over Snake Lake on October 16th, 2016

"NASA says the term supermoon simply means a full moon that is closer to Earth than average.....This kicks off three straight months of supermoons---you can also catch them on Nov 14 and Dec 14. The November moon is set to be a real show-stopper: According to NASA, it is "not only the closest full moon of 2016, but also the closest full moon to date in the 21st century. And it won't be this close to Earth again until 2034."

Info obtained from an article on NPR.org (NPR = National Public Radio in the U.S.)

The Lakes of CALA Memories

We need a minimum of 12 more stories before going to printing of the *Lakes of CALA Memories*.

Get yours in soon to
jvance501@hotmail.com

Bird Count

By Jim and Mary Vance

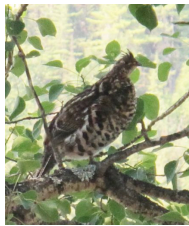


Male & Female Wood Duck

While Mary and I can't pretend to be even amateur bird watchers, we do enjoy sighting and identifying the birds that visit us during our six months at Rabbit Lake each year. In 2016 we have identified the most species ever but this is probably a function of our increasing familiarity with some of them. We're sure there are other CALA members who share our interest in these feathered friends. For comparison with your own experiences, here is a list of the ones we have seen this year anywhere between Rabbit Lake and Temagami on the road, the lake or in the woods. They are listed in the usual order that you find them in field guides and the dates given are our first sightings of the year.



Great Blue Heron



Ruffed Grouse



Downey Woodpeckers



Belted Kingfisher



Bald Eagle

Mallard May 5
Black Duck Sept 24
Green Winged Teal May 10
Ring Necked Duck June 2
Common Merganser May 9
Red Breasted Merganser May 15
Hooded Merganser May 9
Wood Duck May 9
Canada Goose May 6
Common Loon May 5
Double Crested Cormorant June 5
Ring Billed Gull May 6
Broad Winged Hawk May 19

Osprey May 5
Bald Eagle May 10
Turkey Vulture May 19
Coopers Hawk May 16
American Kestrel June 3
Ruffed Grouse May 5
Spruce Grouse May 17
Great Blue Heron May 12
Wilson's Snipe Sept 16
American Woodcock May 5
Common Nighthawk June 4
Belted Kingfisher June 10
Downey Woodpecker May 9

Hairy Woodpecker May 14
Yellow Bellied Sapsucker May 8
Yellow Shafted Flicker May 8
Pileated Woodpecker May 5
Ruby Throated Hummingbird
May 10
Tree Swallow May 21
Yellow Bellied Flycatcher July 12
American Robin May 5
Hermit Thrush Oct 3
Veery July 18

YOUR 2016-2017 CALA EXECUTIVE

PRESIDENT	Peter Olynyk	peter.olynyk@mohawkcollege.ca
PAST PRESIDENT	Jim Vance	jvance501@hotmail.com
VICE PRESIDENT	Sue Olynyk	olynyk@cogeco.ca
SECRETARY	Jamie Vance	casper_vance@yahoo.com
TREASURER	Dave Bellemore	dbellemore@turnermoore.com
DIRECTORS:		
TIMBER	Dave Zimmerman	hubbrd49@ontera.net
FISHING	Chad Armstrong	chad.armstrong@opg.com
WATER QUALITY	Chris D'Aoust	chris.daoust2@rogers.com
WATER MANAGEMENT	Sue Olynyk	olynyk@cogeco.ca
MEMBERSHIP	Greg Feys	gfeys@ciaccess.com
COMMUNICATIONS	Kaye Barrett	barrett.kaye@gmail.com
PROMOTION & COMMUNITY		
LIAISON	Cindy Dougall	cindy.dougall@fibreop.ca
FOCA REP. (Federation of Ontario Cottage Associations)	Jane Smith	janeearchersmith@sympatico.ca

CALA'S MISSION STATEMENT

CALA is committed to conserving the natural beauty of the Cassels and Adjoining Lakes region of Temagami and to sustaining the quality of life for this and future generations. CALA will preserve this commitment by promoting a clean & safe environment, supporting programs that will protect and enhance our fisheries and natural resources, collaborating and communicating with officials, organizations and associations to further develop our region's splendor and to acquire information that will facilitate reliable and informative communications to its members, and by organizing social activities to enrich member relations and to foster growth and involvement within the Association.

