

**2.2    Provincial Parks & Conservation Reserves**

The Matabitchuan River watershed includes four conservation reserves and one provincial park. This section will briefly describe only those conservation reserves that are directly adjacent to the Matabitchuan River system and could be influenced by flows and levels.

**Matabitchuan River Conservation Reserve (CR3a)**

The Matabitchuan River Conservation Reserve has been selected as a site representing old growth red and white pine communities. This 82 hectare parcel of Crown land is located approximately 40 kilometers south of the town of Haileybury, in the geographic township of South Lorrain. This protected area was proposed in the Temagami Land Use Plan and was regulated under the *Public Lands Act* for protection on July 4, 1997.

**Rabbit Lake West Conservation Reserve (CR9)**

The Rabbit Lake West Conservation Reserve has been selected as a site representing old growth red and white pine forests and wetland communities. This 491 hectare parcel of Crown land is located on the western shore of Rabbit Lake, approximately 12 kilometers southeast of Temagami, in the geographic township of Riddell. This protected area was proposed in the Temagami Land Use Plan and was regulated under the *Public Lands Act* for protection on July 4, 1997.

**White Bear Forest Conservation Reserve (CR17)**

The White Bear Forest Conservation Reserve has been selected as a site representing old growth red and white pine forests, diverse plant species, wetland communities and significant stands of white birch and cedar. This 1,242 hectare conservation reserve is located approximately three kilometres east of Temagami at the juncture of the geographic townships of Strathcona, Strathy, Cassels and Riddell. This protected area was proposed in the Temagami Land Use Plan and was regulated under the *Public Lands Act* for protection on July 4, 1997.

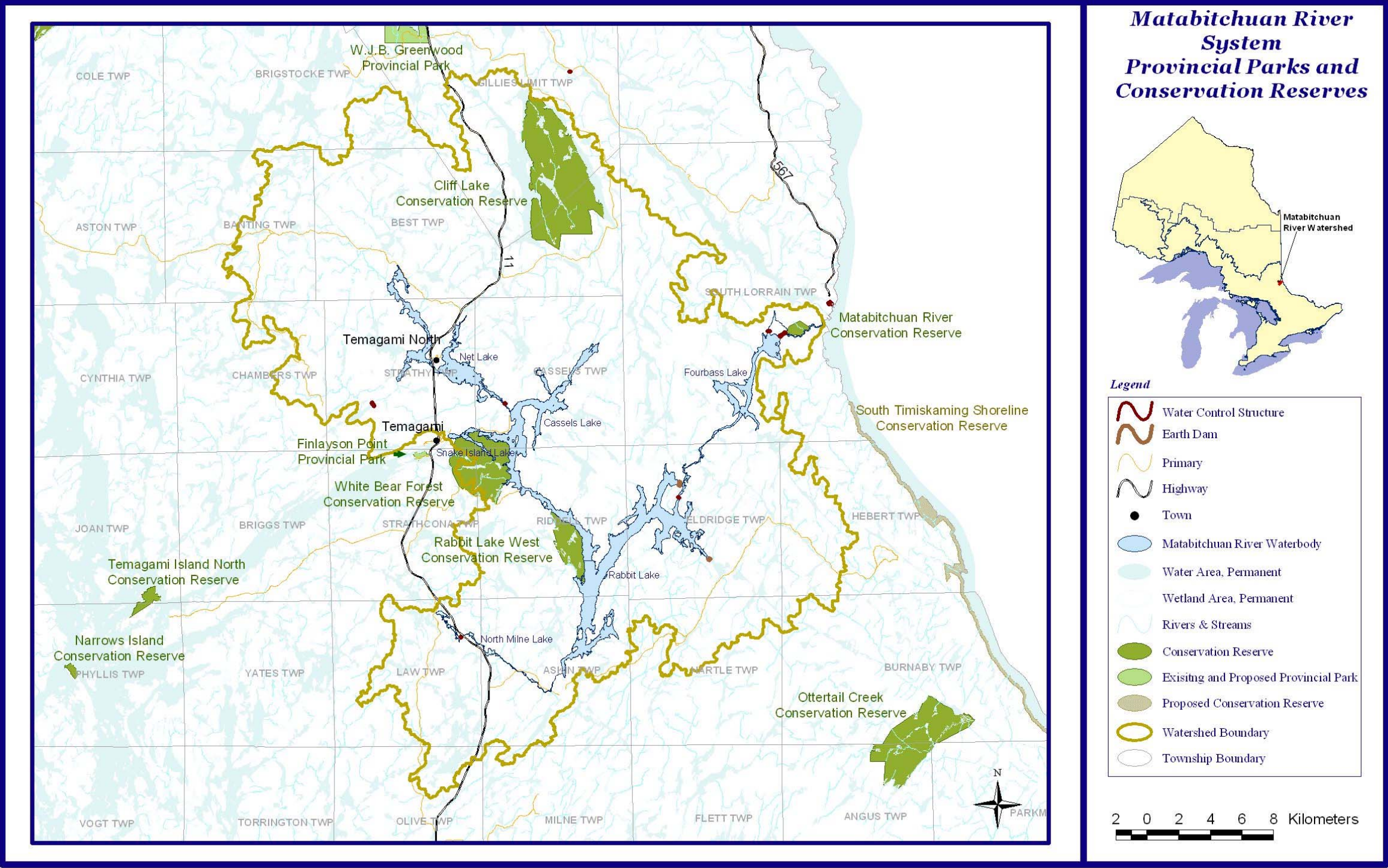


Figure 2.10: Matabitchuan River System Provincial Parks and Conservation Reserves  
(Courtesy of MNR)