

3.0 SOCIO-ECONOMIC DESCRIPTION AND PROFILE OF THE WATERSHED

3.1 Community Profiles

This section gives a description of the population, economy, recreation and tourism of the community in the water management planning area of Temagami.

Community Statistics

	Temagami
Current Population (2001)	893
Population Growth Trend since 1996	-13%
Dominant Employer	Temagami Forest Products
Unemployment rate	8.1%
Average annual household income (2001 \$)	\$39,986
Total of all private households	385

Description of Community

Temagami

The Municipality of Temagami is situated on Highway 11, in the district of Nipissing, approximately 100 kilometres north of the city of North Bay.

On January 1st, 1998, the Municipality of Temagami expanded from three townships to over twenty-three. The municipality now includes most of Lake Temagami and Marten River areas.

Historically, Lake Temagami has been associated with tourism and cottage country since it was discovered in the late 19th century. It became more popular with the coming of the railroad in 1905 which made it much more accessible.

During cottaging season, the population of Temagami increases to approximately 12,000. The high number of cottagers, canoeists, and backcountry hikers that visit the area, boosts the population.

Wilderness and outdoor recreation are year round attractions in Temagami. With its many lodges, cottages and lakes, Temagami is considered one of the best recreational locations in the province.

Top public sector employers:
 Temagami Public School
 Municipality of Temagami

Top private sector employers:
 Temagami Forest Products
 George Mathias Construction
 Temagami Marine
 Temagami Shell
 Temagami Shores

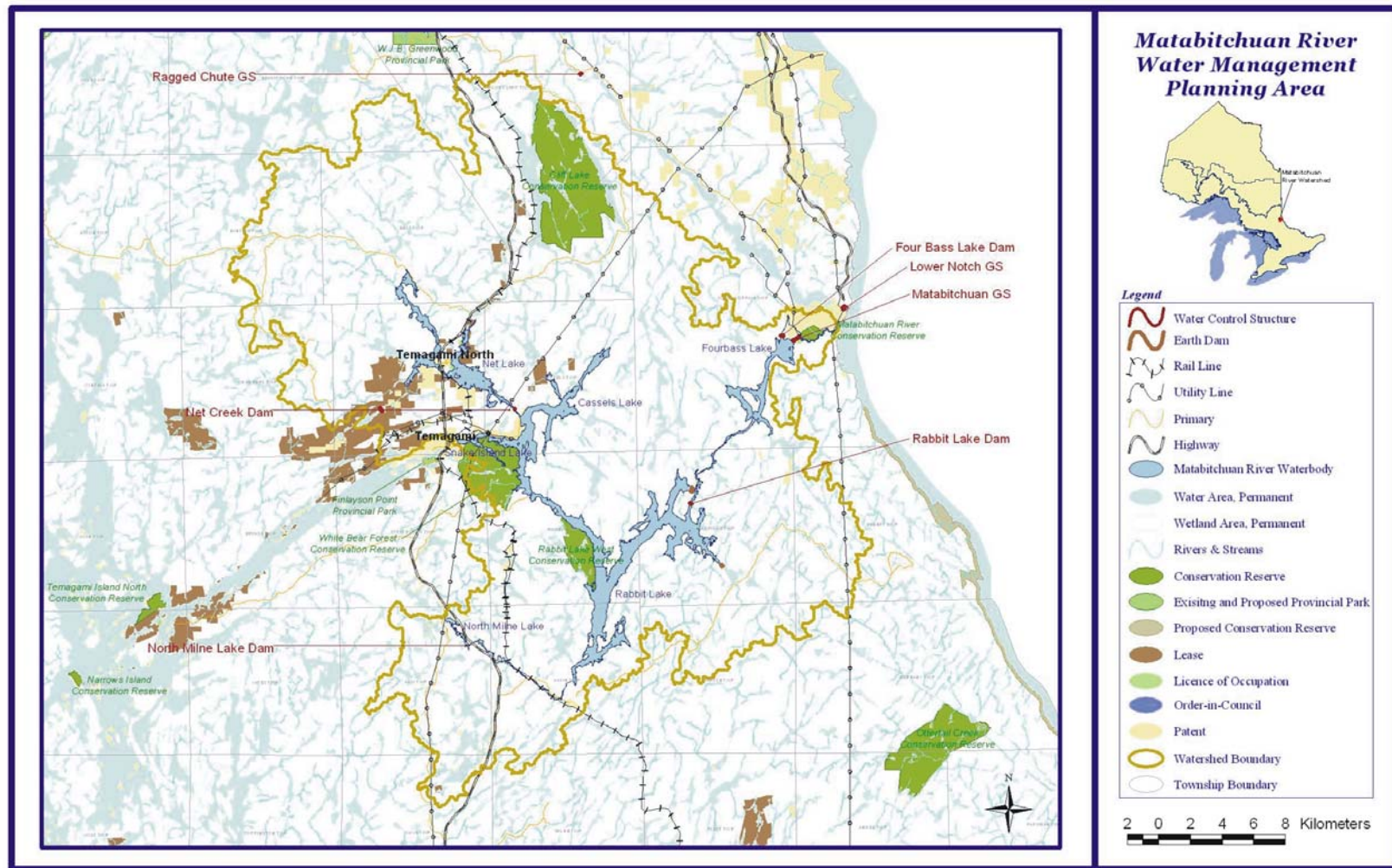


Figure 3.1: Matabitchuan River Water Management Planning Area
(Courtesy of MNR)

There are four important recreational lakes in the Matabitchuan River Watershed. These are Net, Cassels (White Bear), Rabbit and Fourbass Lakes. All of these are road accessible and as such are used by local residents and seasonal users. Each lake will be briefly described in the following sections.

Net Lake

Net Lake is divided by Highway 11 approximately four miles north of the Municipality of Temagami. Access to the lake consists of a boat launch from a picnic site located half a mile north of the Net Lake Bridge. Angling is a popular activity on this lake. During the summer months, cottagers, Temagami residents and tourists fish primarily for walleye, lake trout and smallmouth bass. Winter angling is also a popular activity undertaken by local residents.

Cassels Lake (White Bear Lake)

Located within the geographic townships of Cassels and Riddell, this lake is bordered by Snake Island and Rabbit Lakes. Access to the lake is either by water from Snake Island or Rabbit Lakes or by Gillies Road. Gillies Road leads to the eastern shore of the north arm of the lake where there is a boat launch. Angling is popular on Cassels Lake. Lake trout is fished during the spring and fall overturn (thermal mixing) and walleye is fished near the inlets from Obashkong and Net Lakes. The White Bear Forest Trail system and the Blueberry Lake Trails are popular destinations in this area. The trails are used extensively by local residents and tourists passing through Temagami.

Rabbit Lake

Located approximately 13 kilometers southeast of the Municipality of Temagami, Rabbit Lake is the largest of the six lakes in the Matabitchuan River system. It is accessible via the Gillies Road, Consolidated-Bathurst Road, Roosevelt Road and Highway 11. Water access is also accessible via Cassels Lake. Though popular for fishing and camping, there are few cottages on this lake. Access from Rabbit Lake to the adjacent White Bear Forest hiking trails and Rabbit Lake West Conservation Reserve is possible.

Fourbass Lake

Fourbass Lake supports a popular lake trout and walleye fishery. In the spring, anglers have good success fishing for walleye and northern pike at the inlets from Cooper Lake and the Matabitchuan River. Lake trout fishing is best in the deep basin west of the large central island, during the summer. Access to Fourbass Lake is available via Consolidated Bathurst Road east of Highway 11 approximately 12 miles south of Temagami. Access is also available from the north via Highway 567. The landing at the south end of the lake and a small offshore island provide several camping spots. There are a number of cottages concentrated at the north end of the lake and one commercial camp.



Figure 3.2: Goward Mill Net Lake
(Courtesy of MNR)